

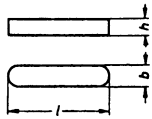
DIN 6885 Part 1

Drive Type Fastenings without Taper Action Parallel Keys Keyways Deep Pattern

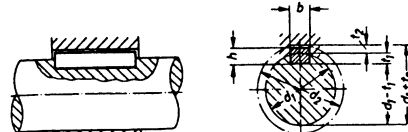
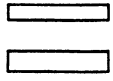
Mitnehmerverbindungen ohne Anzug; Paßfedern, Nuten, hohe Form Dimensions in mm

For connection with an ISO Recommendation in course of preparation, see Explanations.

Type A round-ended 1) 2)

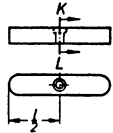


Type B square-ended 1) 2)



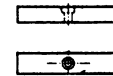
Type C round-ended

size 8x7 and upwards with hole for 1 retaining screw above the stepped line

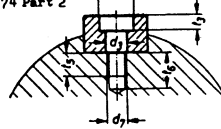


Type D square-ended

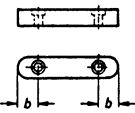
size 12x8 and upwards additionally provided with tapped hole for 1 or 2 jacking screws



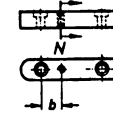
Hole for retaining screw Section K-L Counterbore according to DIN 74 Part 2



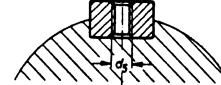
Type E round-ended with holes for 2 retaining screws 3) below the stepped line sizes 8x7 and 10x8



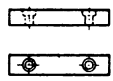
size 12x8 and upwards additionally provided with tapped hole for 1 or 2 jacking screws



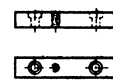
Hole for jacking screw Section M-N



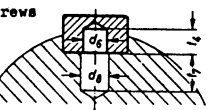
Type F square-ended with holes for 2 retaining screws 3) below the stepped line sizes 8x7 and 10x8



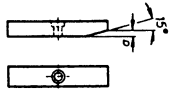
size 12x8 and upwards additionally provided with tapped hole for 1 or 2 jacking screws



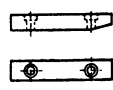
Hole for spring dowel sleeve Section O-P



Type G square-ended with chamfer and hole for 1 retaining screw



Type H square-ended with chamfer and holes for 2 retaining screws



Types of keyway for shafts

N 1



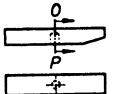
N 2



N 3



Type J square-ended with chamfer and hole for 1 spring dowel sleeve



Sharp edges removed (all round) Chamfer (at manufacturer's choice) RADIUSING



RADIUSING of keyway bottom for shaft and hub



Table with columns for shaft diameter d1, key width b, key height h, and various fit and clearance specifications for different key types.

Table showing weight (7.85 kg/dm³) for Type B kg/1000 pieces 10) for various key sizes and lengths.

Table showing weight deduction for Type A and various hole specifications for retaining screws, jacking screws, and spring dowel sleeves.

For material and 1) to 10), see page 2

Continued on page 2 Explanations on pages 2 and 3

Sofort-Download-Beuth-Thomson Reuters (Scientific) Inc. Mr Lewis Poole-KdNr.7546103-ID.H7ZARE2YKYOPLWWOKINP.BCC.2-2016-05-09 21:36:02

No guarantee can be given in respect of this translation. In accordance with the provisions of this Standard shall be taken as authoritative.

Nechdruck, auch auszugsweise, nur mit Genehmigung des DIN Deutsches Institut für Normung e. V., Berlin 30, gestattet.

Translation Fachtechnische Übersetzungsmw Henry G. Fries e. n. Draisendorfer