

Archived Document

This archived document is no longer being reviewed through the CLSI Consensus Document Development Process. However, this document is technically valid as of August 2020. Because of its value to the laboratory community, it is being retained in CLSI's library.



November 2009

EP18-A2

Risk Management Techniques to Identify and Control Laboratory Error Sources; Approved Guideline—Second Edition

This guideline describes risk management techniques that will aid in identifying, understanding, and managing sources of failure (potential failure modes) and help to ensure correct results. Although intended primarily for *in vitro* diagnostics, this document will also serve as a reference for clinical laboratory managers and supervisors who wish to learn about risk management techniques and processes.

A guideline for global application developed through the Clinical and Laboratory Standards Institute consensus process.

Clinical and Laboratory Standards Institute

Setting the standard for quality in medical laboratory testing around the world.

The Clinical and Laboratory Standards Institute (CLSI) is a not-for-profit membership organization that brings together the varied perspectives and expertise of the worldwide laboratory community for the advancement of a common cause: to foster excellence in laboratory medicine by developing and implementing medical laboratory standards and guidelines that help laboratories fulfill their responsibilities with efficiency, effectiveness, and global applicability.

Consensus Process

Consensus—the substantial agreement by materially affected, competent, and interested parties—is core to the development of all CLSI documents. It does not always connote unanimous agreement but does mean that the participants in the development of a consensus document have considered and resolved all relevant objections and accept the resulting agreement.

Commenting on Documents

CLSI documents undergo periodic evaluation and modification to keep pace with advances in technologies, procedures, methods, and protocols affecting the laboratory or health care.

CLSI's consensus process depends on experts who volunteer to serve as contributing authors and/or as participants in the reviewing and commenting process. At the end of each comment period, the committee that developed the document is obligated to review all comments, respond in writing to all substantive comments, and revise the draft document as appropriate.

Comments on published CLSI documents are equally essential and may be submitted by anyone, at any time, on any document. All comments are managed according to the consensus process by a committee of experts.

Appeal Process

When it is believed that an objection has not been adequately considered and responded to, the process for appeal, documented in the CLSI *Standards Development Policies and Processes*, is followed.

All comments and responses submitted on draft and published documents are retained on file at CLSI and are available upon request.

Get Involved—Volunteer!

Do you use CLSI documents in your workplace? Do you see room for improvement? Would you like to get involved in the revision process? Or maybe you see a need to develop a new document for an emerging technology? CLSI wants to hear from you. We are always looking for volunteers. By donating your time and talents to improve the standards that affect your own work, you will play an active role in improving public health across the globe.

For additional information on committee participation or to submit comments, contact CLSI.

Clinical and Laboratory Standards Institute

P: +1.610.688.0100

F: +1.610.688.0700

www.clsi.org

standard@clsi.org

ISBN 1-56238-712-X
ISSN 0273-3099

EP18-A2
Vol. 29 No. 26
Replaces EP18-A
Vol. 22 No. 28

Risk Management Techniques to Identify and Control Laboratory Error Sources; Approved Guideline—Second Edition

Volume 29 Number 26

Jan S. Krouwer, PhD
Abdel-Baset Halim, DPharm, PhD, DABCC
Aristides T. Hatjimihail, MD, PhD
Ellis Jacobs, PhD, DABCC, FACB
Adam Manasterski, PhD
James H. Nichols, PhD, DABCC, FACB

Abstract

Clinical and Laboratory Standards Institute document EP18-A2—*Risk Management Techniques to Identify and Control Laboratory Error Sources; Approved Guideline—Second Edition* recommends a quality management system for *in vitro* diagnostic test systems that is based on expert opinion, is practical to implement, and is applicable to various devices and settings, so sources of failure (potential failure modes) are identified, understood, and managed. This system will assist device manufacturers, regulators, accrediting agencies, and laboratory directors in ensuring correct results. It addresses regulatory considerations (eg, principles and accountability), recommends the development of a partnership between users and manufacturers, provides a source-of-failures matrix, and suggests approaches to quality monitoring/identification of the problems.

Clinical and Laboratory Standards Institute (CLSI). *Risk Management Techniques to Identify and Control Laboratory Error Sources; Approved Guideline—Second Edition*. CLSI document EP18-A2 (ISBN 1-56238-712-X). Clinical and Laboratory Standards Institute, 950 West Valley Road, Suite 2500, Wayne, Pennsylvania 19087 USA, 2009.

The Clinical and Laboratory Standards Institute consensus process, which is the mechanism for moving a document through two or more levels of review by the health care community, is an ongoing process. Users should expect revised editions of any given document. Because rapid changes in technology may affect the procedures, methods, and protocols in a standard or guideline, users should replace outdated editions with the current editions of CLSI documents. Current editions are listed in the CLSI catalog and posted on our website at www.clsi.org. If your organization is not a member and would like to become one, and to request a copy of the catalog, contact us at: Telephone: 610.688.0100; Fax: 610.688.0700; E-Mail: customerservice@clsi.org; Website: www.clsi.org.



Copyright ©2009 Clinical and Laboratory Standards Institute. Except as stated below, any reproduction of content from a CLSI copyrighted standard, guideline, companion product, or other material requires express written consent from CLSI. All rights reserved. Interested parties may send permission requests to permissions@clsi.org.

CLSI hereby grants permission to each individual member or purchaser to make a single reproduction of this publication for use in its laboratory procedure manual at a single site. To request permission to use this publication in any other manner, e-mail permissions@clsi.org.

Suggested Citation

CLSI. *Risk Management Techniques to Identify and Control Laboratory Error Sources; Approved Guideline—Second Edition*. CLSI document EP18-A2. Wayne, PA: Clinical and Laboratory Standards Institute; 2009.

Previous Editions:

November 1999, December 2002, August 2007, March 2009

Reaffirmed:

April 2016

Archived:

August 2020

Committee Membership

Area Committee on Evaluation Protocols

Greg Cooper, CLS, MHA
Chairholder
Bio-Rad Laboratories, Inc.,
QSD Division
Plano, Texas, USA

R. Neill Carey, PhD
Vice-Chairholder
Peninsula Regional Medical
Center
Salisbury, Maryland, USA

John Rex Astles, PhD, FACB
 Centers for Disease Control and
 Prevention
 Atlanta, Georgia, USA

Jeffrey R. Budd, PhD
 Beckman Coulter, Inc.
 Chaska, Minnesota, USA

George S. Cembrowski, MD, PhD
 University of Alberta Hospital
 Edmonton, Alberta, Canada

David L. Duewer, PhD
 National Institute of Standards and
 Technology
 Gaithersburg, Maryland, USA

Anders Kallner, MD, PhD
 Karolinska Hospital
 Stockholm, Sweden

James F. Pierson-Perry
 Siemens Healthcare Diagnostics
 Newark, Delaware, USA

Mitchell G. Scott, PhD
 Washington University School of
 Medicine
 St. Louis, Missouri, USA

Lakshmi Vishnuvajjala, PhD
 FDA Center for Devices and
 Radiological Health
 Rockville, Maryland, USA

Advisors

David A. Armbruster, PhD,
 DABCC, FACB
 Abbott Diagnostics
 Abbott Park, Illinois, USA

Carl C. Garber, PhD, FACB
 Quest Diagnostics, Incorporated
 Lyndhurst, New Jersey, USA

Patricia E. Garrett, PhD
 SeraCare Life Sciences, Inc.
 Portland, Maine, USA

Claude Giroud, PhD
 Bio-Rad Laboratories, Inc.
 Marnes-La-Coquette, France

Martin H. Kroll, MD
 Boston Medical Center
 Boston, Massachusetts, USA

Jan S. Krouwer, PhD
 Krouwer Consulting
 Sherborn, Massachusetts, USA

Jacob (Jack) B. Levine, MBA
 Siemens Healthcare Diagnostics
 Tarrytown, New York, USA

Kristian Linnet, MD, PhD
 University of Copenhagen
 Copenhagen, Denmark

Robert J. McEnroe, PhD
 Roche Diagnostics Operations, Inc.
 Indianapolis, Indiana, USA

James H. Nichols, PhD, DABCC,
 FACB
 Baystate Medical Center
 Springfield, Massachusetts, USA

Luann Ochs, MS
 BD Diagnostics-TriPath
 Durham, North Carolina, USA

Donald R. Parker, PhD
 Bayer HealthCare, LLC
 Elkhart, Indiana, USA

Nils B. Person, PhD, FACB
 Siemens Healthcare Diagnostics
 Flanders, New Jersey, USA

Donald M. Powers, PhD
 Powers Consulting Services
 Pittsford, New York, USA

Max Robinowitz, MD
 FDA Center for Devices and
 Radiological Health
 Rockville, Maryland, USA

Michele M. Schoonmaker, PhD
 Cepheid
 Sunnyvale, California, USA

Daniel W. Tholen, MS
 American Association for
 Laboratory Accreditation
 Traverse City, Michigan, USA

Jack Zakowski, PhD, FACB
 Beckman Coulter, Inc.
 Brea, California, USA

Subcommittee on Risk Management Techniques to Identify and Control Laboratory Error Sources

Jan S. Krouwer, PhD
Chairholder
Krouwer Consulting
Sherborn, Massachusetts, USA

Sousan S. Altaie, PhD
 FDA Center for Devices and
 Radiological Health
 Rockville, Maryland, USA

Aristides T. Hatjimihail, MD, PhD
 Hellenic Complex Systems
 Laboratory
 Drama, Greece

Ellis Jacobs, PhD, DABCC, FACB
 NY City Health & Hospital
 Corporation
 New York, New York, USA

Christine Krenc
 Abbott Diagnostics
 Abbott Park, Illinois, USA

James H. Nichols, PhD, DABCC,
 FACB
 Baystate Medical Center
 Springfield, Massachusetts, USA

Anthony O. Okorodudu, PhD,
 DABCC, FACB
 University of Texas Medical Branch
 Galveston, Texas, USA

Diane I. Szamosi, MA,
 MT(ASCP)SH
 Becton Dickinson
 Franklin Lakes, New Jersey, USA

Advisors

Patricia E. Garrett, PhD
 SeraCare Life Sciences, Inc.
 Portland, Maine, USA

Advisors (Continued)

Abdel-Baset Halim, DPharm, PhD,
DABCC
Daiichi Sankyo Pharma
Development
Edison, New Jersey, USA

David L. Phillips
HemoSense, Inc.
San Jose, California, USA

Staff

Clinical and Laboratory Standards
Institute
Wayne, Pennsylvania, USA

Lois M. Schmidt, DA
*Vice President, Standards
Development and Marketing*

David E. Sterry, MT(ASCP)
Staff Liaison

Melissa A. Lewis, ELS
Editorial Manager

Carol DiBerardino, MLA, ELS
Assistant Editor

Acknowledgment

CLSI and the Subcommittee on Risk Management Techniques to Identify and Control Laboratory Failure Sources gratefully acknowledge the following volunteer for his important contributions to the development and/or completion of this document:

Adam Manasterski, PhD (CDC/retired)
Atlanta, Georgia, USA

Contents

Abstract.....	i
Committee Membership.....	iii
Foreword.....	vii
Laboratory Failure Sources and CLSI Evaluation Protocols Documents	ix
1 Scope.....	1
2 Introduction.....	1
3 Standard Precautions.....	2
4 Terminology.....	3
4.1 A Note on Terminology	3
4.2 Definitions	3
4.3 Abbreviations and Acronyms	7
5 User-Manufacturer Quality Partnership.....	7
5.1 Manufacturer’s Responsibilities	7
5.2 User’s Responsibilities	8
6 FMEA/FTA, and FRACAS	9
6.1 Description of FMEA/FTA, and FRACAS	9
6.2 Definition and Purpose	10
6.3 Some General Guidelines for FMEA/FTA, and FRACAS	12
6.4 Description of FMEA Table Entries	12
6.5 Fault Trees	15
6.6 FRACAS (See Appendix D).....	16
6.7 Control Measures (FMEA) or Corrective Action (FRACAS)	18
6.8 Outcome Monitoring (FMEA).....	20
6.9 Rate Measure (FRACAS)	20
6.10 Other Considerations	20
6.11 Pareto Analysis	20
6.12 More on FRACAS for Clinical Laboratories.....	21
6.13 Other Aids to Facilitate FMEA and FRACAS	23
References.....	24
Explanation of the Appendixes.....	26
Appendix A. Example of a “System-Specific Sources of Failure” Matrix – an FMEA	27
Appendix B. An Example of a Manufacturer’s FMEA	35
Appendix C. Laboratory FMEA: Manufacturer-Completed Part and Clinical Laboratory–Completed Part.....	52
Appendix D. Example of a FRACAS	59
Appendix E. A Note on Unit-Use Devices	61

Contents (Continued)

Summary of Comments and Subcommittee Responses63

The Quality Management System Approach80

Related CLSI Reference Materials81

Foreword

In vitro diagnostic (IVD) devices play a crucial role in patient care, and the quality and reliability of IVD results are paramount. However, all devices and methods may be subject to preanalytical, analytical, and postanalytical (preexamination, examination, and postexamination) failure. The relative importance and probability (ie, the risk) of a specific failure condition may vary with the device design, the user, the medical application, and the operating environment. A single quality assurance and quality control (QA/QC) regimen that optimally mitigates risk for all devices does not exist. As a greater variety of devices and tests become available to meet clinical demands in various environments, including outside the traditional laboratory at the point of patient care, a pressing need to ensure and control quality in the most effective and efficient manner has been noted. Such QA/QC regimens should be based on the characteristics of the device in use, taking into consideration local variables, such as the intended use of the test and the testing environment and users. Furthermore, QA/QC procedures should be developed systematically using established quality management tools, such as Failure Modes and Effects Analysis (FMEA) and Failure Reporting, Analysis, and Corrective Action Systems (FRACAS).

The original version of this document, EP18-A—*Quality Management for Unit-Use Testing*, was limited to unit-use devices (see Appendix E). The impetus for the original document was that

“Conventional quality assurance and quality control methods in and of themselves do not assure quality. A one-size-fits-all or prescribed quality control testing protocol such as ‘two levels per day of use’ may not be appropriate for all testing systems. The diversity among regulatory requirements, accreditation practices, and user needs, coupled with the financial aspects of this QC method, led to the formation of the CLSI Subcommittee on Unit-Use Testing.

It is the subcommittee’s intent to provide a comprehensive and flexible guideline that will enable users, manufacturers, and regulators to identify potential sources of failures in unit-use test systems and implement processes to manage these failures using new quality management models.”

The original subcommittee anticipated that a broader based guideline could be created that would address both unit-use and multiuse systems. Accordingly, this revision of EP18 is applicable to all IVDs.

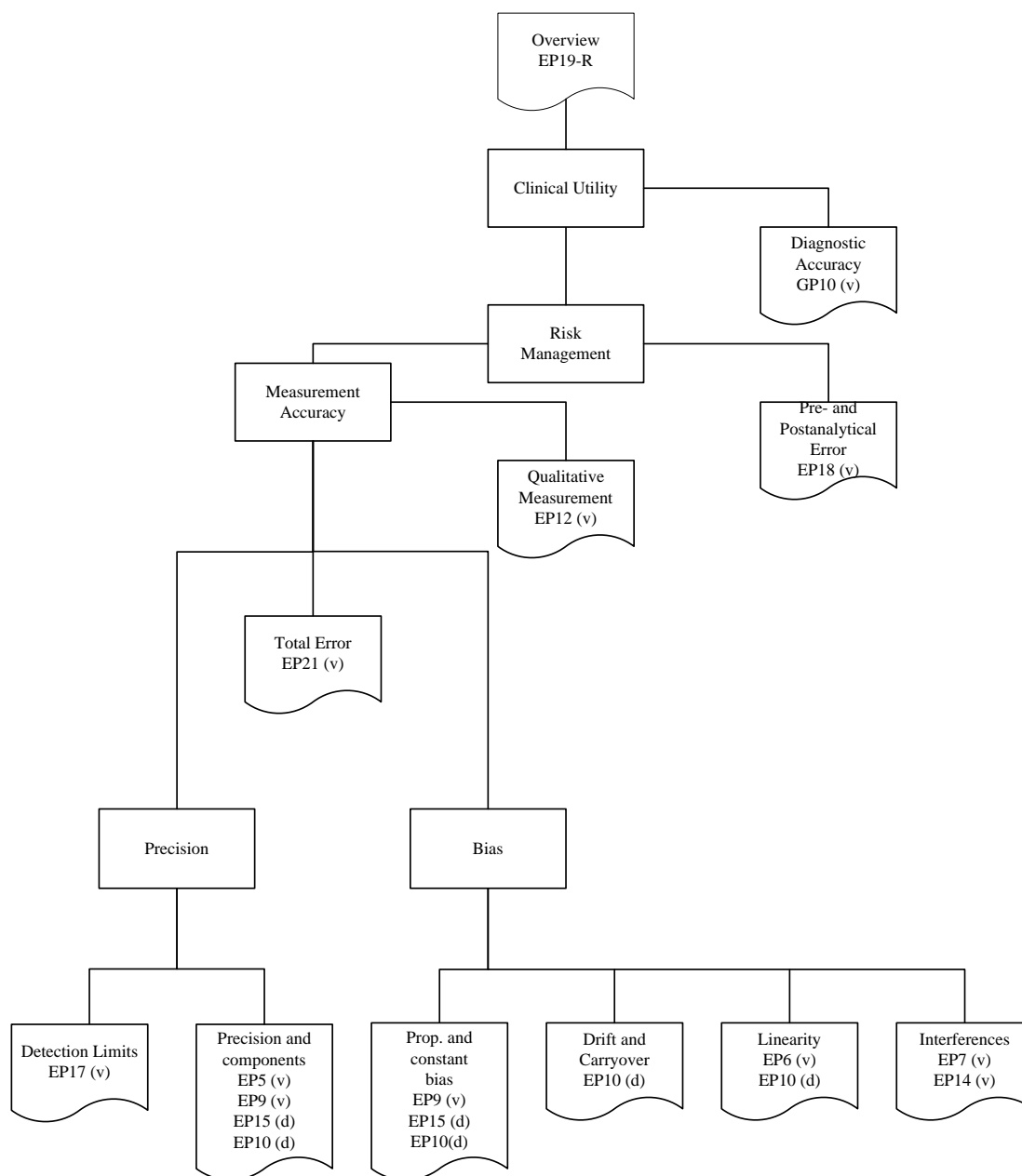
As represented in the table below, this document is intended to provide guidance to manufacturers of IVD devices and laboratory directors to assist in identifying potential risks and developing a strategy to control quality and mitigate potential failures.

	Prevention	Detection
Manufacturer	Risk assessment and risk mitigation for manufacturers References: <ul style="list-style-type: none"> • International Organization for Standardization (ISO) 14971¹ • CLSI document EP18 	Embedded instrument checks and controls Information regarding design features intended to mitigate risk of potential device failures that can affect the accuracy of test results
Laboratory	Techniques (FMEA and FRACAS) to identify and control laboratory failure sources Reference: <ul style="list-style-type: none"> • CLSI document EP18 	Laboratory implemented quality control procedures Reference: <ul style="list-style-type: none"> • ISO 15189²

Key Words

Quality assurance, quality control, quality management, quality system, risk management

Laboratory Failure Sources and CLSI Evaluation Protocols Documents



Adapted from Krouwer JS. Estimating total analytical failure and its sources: techniques to improve method evaluation. *Arch Pathol Lab Med.* 1992;116:726-731.³ Copyright © 1992 American Medical Association. All rights reserved. Reprinted with permission.

Laboratory Failure Sources and CLSI Evaluation Protocols (EP) Documents.^a This figure illustrates the relationship among parameters estimated by EP documents. Items higher up in the figure are more comprehensive, whereas lower level items are more specific. Overall, the figure is much like a cause-and-effect diagram. Documents marked (d) provide guidance for demonstrating that a source of measurement inaccuracy is within acceptable limits. Documents marked (v) provide guidance for more rigorous evaluation of inaccuracy components.

^aFor a description of each of the documents listed, please see the Related CLSI Reference Materials section at the end of this document.

Risk Management Techniques to Identify and Control Laboratory Error Sources; Approved Guideline—Second Edition

1 Scope

This document provides guidance for risk management activities that include risk analysis (Failure Modes and Effects Analysis [FMEA]), fault trees, and risk monitoring (Failure Reporting, Analysis, and Corrective Action Systems [FRACAS]). These approaches are based on best practices; practical to implement; applicable to all diagnostics assays; and scientifically based, so sources of failure are identified, understood, and managed.

This guideline applies to *in vitro* diagnostic device (IVD) test systems used by providers of health care services in any setting. The scope of this guideline comprises testing components, locations, and users. Specifically, the testing components include preanalytical, analytical, and postanalytical (preexamination, examination, and postexamination) processes.

This document is intended primarily for IVD manufacturers. However, it is also intended as an important reference for clinical laboratory directors and supervisors who wish to learn about risk management techniques and processes. Although the concept of risk reduction is not new in the laboratory, the risk management tools in this guideline may be new to laboratorians, and will create a need for laboratory directors and supervisors to gain an understanding of these techniques so they can apply these principles and processes in development of their customized quality plan. EP18 is intended to help in that effort.

2 Introduction

Diagnostic testing presents unique challenges to manufacturers, users, regulators, and accrediting agencies. Manufacturers and the clinical laboratory are faced with the task of keeping systems operational and producing results (reliability), as well as ensuring that the results meet minimum performance standards. Examples include accuracy and those elements that affect accuracy such as precision, bias, and limit of detection. *Any* failure source (see Appendix B for some examples of failures) can affect the accuracy and/or reliability of a result.

Risk management attempts to answer four questions:

1. What can go wrong? (process mapping, brainstorming)
2. How bad is it? (severity of harm, especially with downstream events)
3. How often? (probability of occurrence for potential errors, frequency of occurrence for observed errors)
4. What should be done to mitigate/reduce the risk? (prioritization of risks)

Many evaluation protocols documents have focused on evaluating parameters that affect accuracy, such as linearity (see CLSI document EP06),⁴ precision (see CLSI document EP05),⁵ and bias (see CLSI document EP09).⁶ EP18 takes a more global approach regarding accuracy and reliability by using risk analysis methods to ensure that

- The risk of potentially hazardous situations has been lowered to an acceptable level.
- The rate of hazardous situations that have occurred has been lowered to an acceptable level where an acceptable level can be as low as reasonably practicable (ALARP) level.