

Australian Standard<sup>®</sup>

**Earth-retaining structures**



This Australian Standard® was prepared by Committee CE-032, Reinforced Soils and Retaining Structures. It was approved on behalf of the Council of Standards Australia on 16 November 2001.

This Standard was published on 26 February 2002.

---

The following are represented on Committee CE-032:

- Association of Consulting Engineers, Australia
  - Australian Industry Group
  - Australian Geomechanics Society
  - AUSTROADS
  - Cement and Concrete Association of Australia
  - Concrete Institute of Australia
  - Concrete Masonry Association of Australia
  - Construction Industry Advisory Council
  - Institution of Engineers Australia
  - Master Builders Australia
  - University of New South Wales
  - University of Technology, Sydney
- 

This Standard was issued in draft form for comment as DR 96405.

Standards Australia wishes to acknowledge the participation of the expert individuals that contributed to the development of this Standard through their representation on the Committee and through the public comment period.

---

### **Keeping Standards up-to-date**

Australian Standards® are living documents that reflect progress in science, technology and systems. To maintain their currency, all Standards are periodically reviewed, and new editions are published. Between editions, amendments may be issued.

Standards may also be withdrawn. It is important that readers assure themselves they are using a current Standard, which should include any amendments that may have been published since the Standard was published.

Detailed information about Australian Standards, drafts, amendments and new projects can be found by visiting **[www.standards.org.au](http://www.standards.org.au)**

Standards Australia welcomes suggestions for improvements, and encourages readers to notify us immediately of any apparent inaccuracies or ambiguities. Contact us via email at **[mail@standards.org.au](mailto:mail@standards.org.au)**, or write to Standards Australia, GPO Box 476, Sydney, NSW 2001.

---

AS 4678—2002  
(Incorporating Amendment Nos 1 and 2)

Australian Standard<sup>®</sup>

## Earth-retaining structures

First published as AS 4678—2002.  
Reissued incorporating Amendment No. 1 (July 2003).  
Reissued incorporating Amendment No. 2 (August 2008).

### **COPYRIGHT**

© Standards Australia

All rights are reserved. No part of this work may be reproduced or copied in any form or by any means, electronic or mechanical, including photocopying, without the written permission of the publisher.

Published by Standards Australia GPO Box 476, Sydney, NSW 2001, Australia

ISBN 0 7337 4238 6

## PREFACE

This Standard was prepared by the Standards Australia Committee, CE-032, Reinforced Soils and Retaining Structures, in response to a call from the building industry for the establishment of a Standard on earth-retaining systems, including reinforced soils.

*This Standard incorporates Amendment No. 1 (July 2003) and Amendment No. 2 (August 2008). The changes required by the Amendment are indicated in the text by a marginal bar and amendment number against the clause, note, table, figure or part thereof affected.*

The objective of this Standard is to provide designers of earth-retaining structures with design criteria and guidance for use in design applications.

The terms ‘informative’ has been used in this Standard to define the application of the appendix to which it applies. An ‘informative’ appendix is only for information and guidance.

As far as practicable, this Standard has been made consistent with the approach taken in the loading code for structures, AS 1170, *Minimum design loads on structures*. This enables the Standard to be used in combination with structure design Standards such as AS 1720, *Timber Structures*, AS 3600, *Concrete Structures*, AS 4100, *Steel Structures*, and AS 3700, *Masonry structures*. Some specific applications are covered by other Standards and documents. For example, HB 77, *Australian Bridge Design Code*, should be used to design earth-retaining structures associated with road bridges.

## CONTENTS

	<i>Page</i>
SECTION 1 SCOPE AND GENERAL	
1.1 SCOPE .....	5
1.2 APPLICATION .....	6
1.3 REFERENCED DOCUMENTS .....	7
1.4 DEFINITIONS .....	7
1.5 NOTATION .....	11
SECTION 2 INVESTIGATION AND TESTING	
2.1 INVESTIGATIONS .....	15
2.2 TESTING .....	17
SECTION 3 DESIGN REQUIREMENTS	
3.1 GENERAL .....	18
3.2 DESIGN CONSIDERATIONS FOR ULTIMATE LIMIT STATE.....	18
3.3 DESIGN CONSIDERATIONS FOR SERVICEABILITY LIMIT STATE.....	19
3.4 DESIGN LIFE .....	27
3.5 DURABILITY AND PERFORMANCE OVER TIME.....	28
3.6 DRAINAGE .....	28
3.7 INFLUENCE OF CONSTRUCTION ON ADJACENT GROUND AND STRUCTURES.....	29
3.8 SUBMERGED STRUCTURES.....	29
3.9 CONNECTIONS .....	30
SECTION 4 DESIGN LOADS	
4.1 LOADS.....	31
4.2 LOAD COMBINATIONS .....	32
SECTION 5 MATERIAL DESIGN FACTORS	
5.1 GENERAL .....	33
5.2 MATERIAL STRENGTH FACTORS FOR SOIL SHEAR STRENGTH.....	33
5.3 MATERIAL FACTORS FOR STRUCTURAL COMPONENTS.....	34
5.4 STRUCTURE CLASSIFICATION FACTOR .....	34
5.5 STRENGTH FACTORS FOR SOIL REINFORCEMENT .....	35
SECTION 6 CONSTRUCTION	
6.1 GENERAL .....	39
6.2 CONSTRUCTION TOLERANCES .....	39
6.3 SPECIFIC REQUIREMENTS.....	40
SECTION 7 PERFORMANCE MONITORING .....	42
APPENDICES	
A STRUCTURE CLASSIFICATION .....	43
B GROUND ANCHORS .....	46
C SOIL NAILING FOR EARTH-RETAINING STRUCTURES .....	55
D SOIL AND MATERIAL PROPERTIES.....	61
E DESIGN MODELS AND METHODS .....	70
F MATERIAL SELECTION AND DURABILITY .....	77

	<i>Page</i>
G DRAINAGE OF EARTH-RETAINING STRUCTURES .....	80
H REINFORCED SOIL FACING SYSTEM CONNECTION LOADS .....	92
I EARTHQUAKE DESIGN .....	93
J LOAD COMBINATIONS .....	104
K PARTIAL MATERIAL STRENGTH FACTOR DETERMINATION FOR SOIL REINFORCEMENT .....	119

## STANDARDS AUSTRALIA

**Australian Standard**  
**Earth-retaining structures**

## SECTION 1 SCOPE AND GENERAL

**1.1 SCOPE**

This Standard sets out requirements and recommendations relating to the design and construction of structures required to retain soil, rock and other materials. It also includes requirements and recommendations for the reinforcement of soil and rock materials.

This Standard does not prescribe specific methods of analysis.

NOTE: Various organizations and authorities may develop detailed guides and specifications based on the principles set out in this Standard.

This Standard is in limit state format.

This Standard does not provide requirements and recommendations for ‘revetment type’ structures, which are sometimes used to retain soil, rock and other materials at slopes steeper than that which the soil, rock or other material would naturally assume.

The retaining structures encompassed by this Standard are indicated in Figure 1.1.

A1 | Facings constructed up to 800 mm high in a Type 3 structure application are not covered by this Standard.

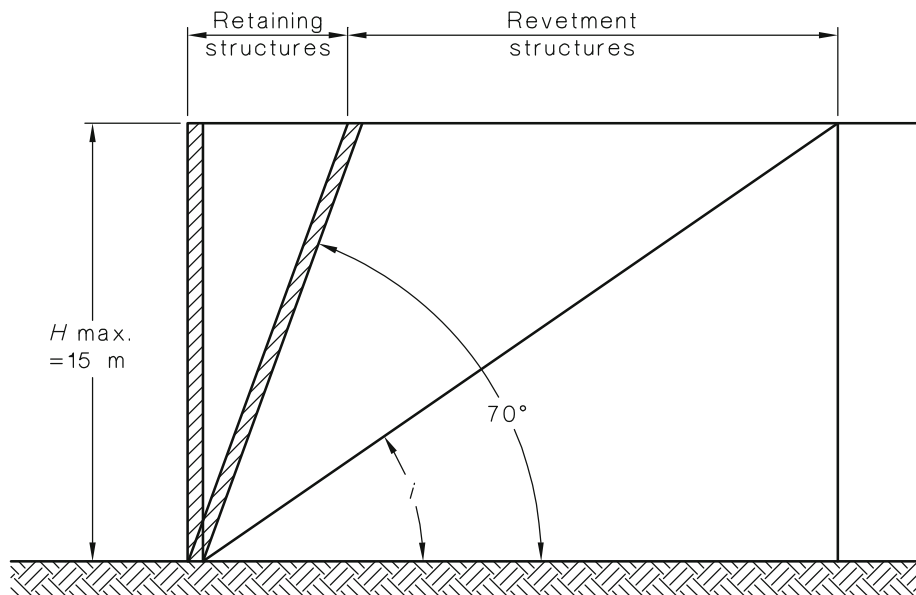


FIGURE 1.1 RETAINING AND REVETMENT STRUCTURES