

PERFORMANCE SPECIFICATION SHEET

SWITCH, PUSH BUTTON, ILLUMINATED, 4-LAMP, SOLID MOUNT, (MODULAR CONSTRUCTED)

This specification is approved for use by all Departments and Agencies of the Department of Defense.

The complete requirements for acquiring the switches described herein shall consist of this specification and the latest issue of MIL-PRF-22885.

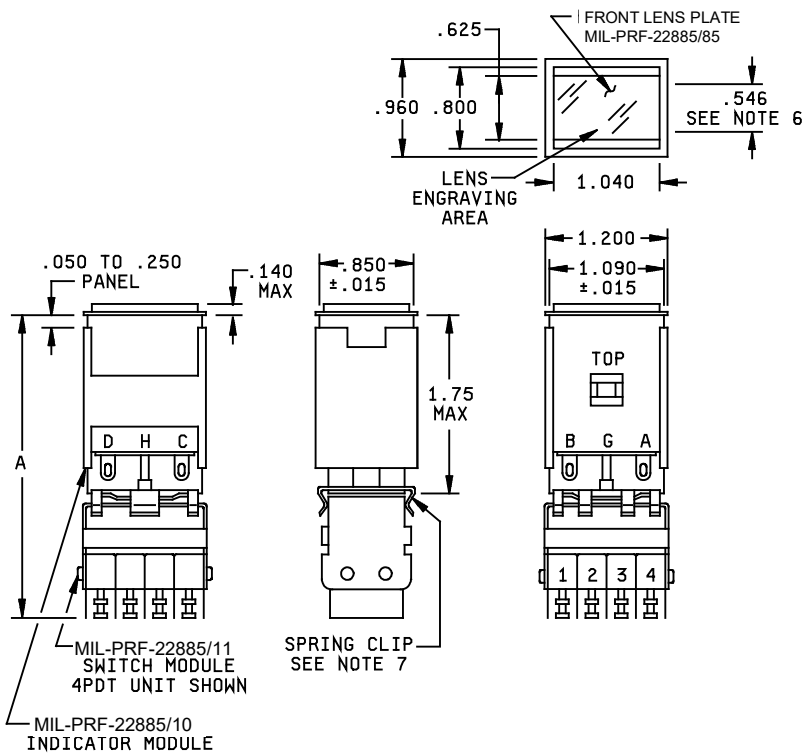


FIGURE 1. Switch, pushbutton, illuminated.

