

DETAIL SPECIFICATION SHEET
SWITCH, ROTARY, CLOSED CONSTRUCTION, 1/4 AMPERE, STYLE SR36

This specification sheet is approved for use by all Departments and Agencies of the Department of Defense.

The requirements for acquiring the product described herein shall consist of this specification sheet and MIL-DTL-3786.

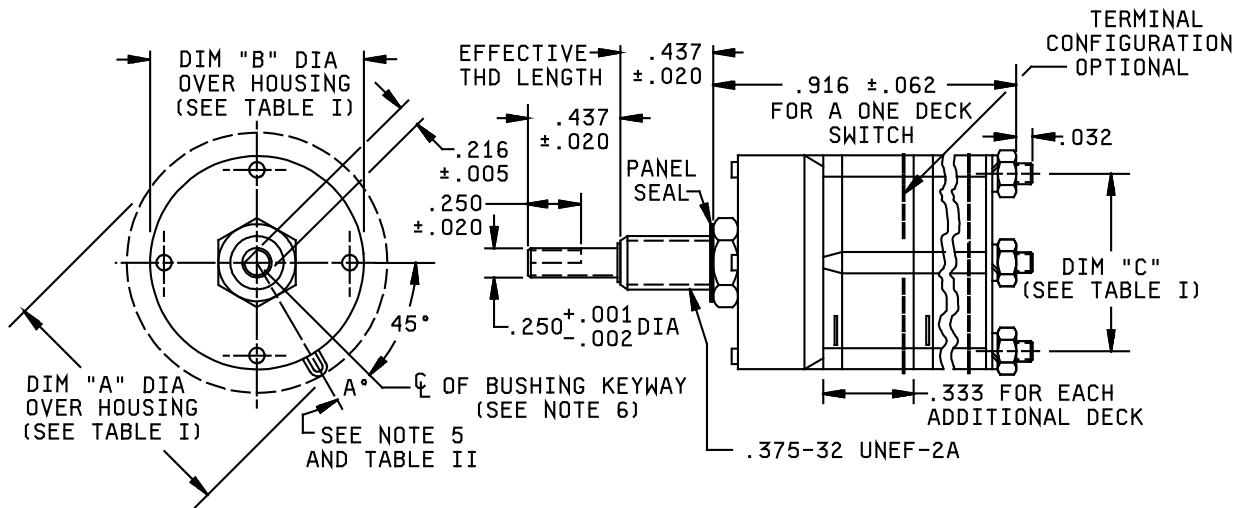


Table 1

ANGLE OF THROW	DIM. "A"	DIM. "B"	DIM. "C"
15°	1.350	1.281	1.156
18°, 22½°	1.190	1.125	1.000

NOTES:

- Dimensions are in inches. Metric equivalents (to the nearest .01 mm) are given for general information only and are based upon 1 inch = 25.4 mm.
- Unless otherwise specified, tolerances are ± 0.015 (.38 mm) and $\pm 3^\circ$ on angles (non-accumulative).
- Maximum weight: One deck switch is 50 grams. Add 10 maximum grams for each additional decks based upon 1 oz. = 28.35 grams.
- Shaft flat angle A is the angle between a line through the center of the shaft and center of the bushing keyway, and another line through the center of the shaft and perpendicular to the shaft flat, with switch in Position Number 1. This refers to panel position. See Figure 2 for terminal location.
- Bushing keyway .069 (1.75 mm) \pm .005 (.13 mm) wide by .036 (.91 mm) \pm .003 (0.08 mm) deep measured from a .375 (9.53 mm) diameter.
- Intergal tab shall not be furnished.

FIGURE 1. Style SR36 switch.

