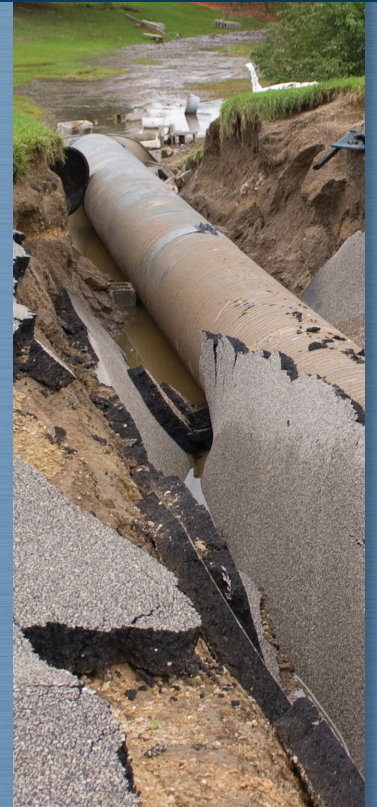


Culvert & Storm Drain System Inspection Guide

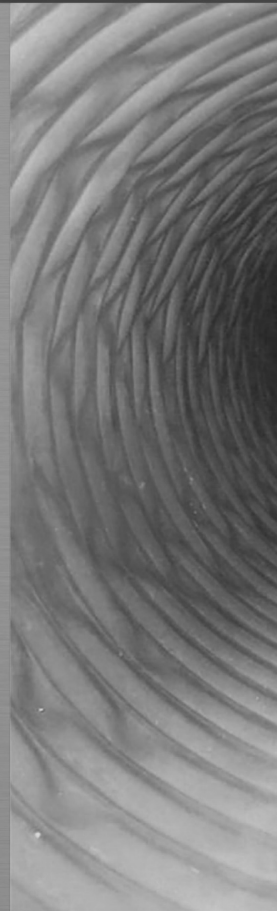


CSDIM-1
ISBN: 978-1-56051-720-7

2020
First Edition

AMERICAN ASSOCIATION
OF STATE HIGHWAY AND
TRANSPORTATION OFFICIALS
AASHTO

Culvert & Storm Drain System Inspection Guide



CSDIM-1
ISBN: 978-1-56051-720-7

2020
First Edition

SECTION 1: INTRODUCTION

TABLE OF CONTENTS

1.1 GENERAL 1-1

1.2 NEED FOR STANDARDIZED INSPECTION 1-1

 1.2.1—Structural Integrity 1-3

 1.2.2—Hydraulic Performance 1-3

 1.2.3—Roadside Compatibility 1-4

1.3 OBJECTIVES, AUDIENCE, AND ORGANIZATION OF THE GUIDE 1-4

 1.3.1—Objectives 1-4

 1.3.2—Audience 1-4

 1.3.3—Organization of the Guide 1-4

SECTION 2: DESIGN AND PERFORMANCE CHARACTERISTICS

TABLE OF CONTENTS

2.1 GENERAL2-1

2.2 DESIGN CHARACTERISTICS2-1

2.2.1—Hydraulic Requirements.....2-1

2.2.1.1—Sedimentation.....2-1

2.2.1.1.1—Inlet and Outlet Protection.....2-2

2.2.1.1.2—Protection against Piping2-2

2.2.2—Structural Behavior (Flexible vs. Rigid)2-2

2.2.2.1—Flexible Culvert Behavior2-2

2.2.2.2—Rigid Culvert Behavior.....2-4

2.2.3—Loads on Culverts and Storm Drains.....2-6

2.2.3.1—Dead Loads2-6

2.2.3.2—Live Loads2-7

2.2.3.2.1—Highway Loads.....2-7

2.2.4—Construction and Installation Requirements2-8

2.2.4.1—Installation Conditions2-9

2.2.4.2—Compaction and Side Support2-10

2.2.4.3—Trench Width2-10

2.2.4.4—Foundations and Bedding2-10

2.2.4.5—Minimum Fill Depth.....2-10

2.2.4.6—Camber.....2-10

2.2.4.7—High Groundwater2-11

2.3 PERFORMANCE CHARACTERISTICS OF CULVERTS AND STORM DRAINS.....2-11

2.3.1—Durability2-11

2.3.1.1—Corrosion of Metals2-11

2.3.1.2—Degradation of Concrete2-14

2.3.1.2.1—Acid Attack2-15

2.3.1.2.2—Alkali–Aggregate Reactivity (AAR)2-15

2.3.1.2.3—Sulfate Attack2-15

2.3.1.2.4—Hydrogen Sulfide Attack.....2-15

2.3.1.2.5—Freeze–Thaw Damage.....2-15

2.3.1.2.6—Impact Damage.....2-15

2.3.1.2.7—Corrosion of Reinforcing Steel2-15

2.3.1.3—Degradation of Plastics2-16

2.3.1.3.1—Oxidation Degradation2-16

2.3.1.3.2—Environmental Stress Cracking (ESC).....2-16

2.3.1.3.3—Photo-Induced Degradation (UV Degradation).....2-16

2.3.1.3.4—Thermal Degradation2-16

2.3.1.3.5—Chlorine-Induced Degradation2-17

2.3.1.4—Abrasion2-17

SECTION 3: INSPECTION PROCEDURE

TABLE OF CONTENTS

3.1 GENERAL 3-1

3.2 PURPOSE AND SCOPE OF INSPECTIONS 3-1

3.3 INSPECTION FREQUENCY 3-2

 3.3.1—Size 3-2

 3.3.2—Condition Rating..... 3-2

 3.3.3—Structure Age 3-3

 3.3.4—Average Daily Traffic (ADT)..... 3-3

 3.3.5—Environmental Conditions..... 3-3

 3.3.6—Special Function 3-3

3.4 PREPARATION AND PLANNING 3-3

 3.4.1—Organizing and Scheduling Inspections 3-3

 3.4.2—Review of Inventory and Data from Previous Inspections..... 3-4

 3.4.3—Gaining Access through Locked Access Points 3-5

 3.4.4—Inspection Sequence 3-5

3.5 TYPES OF INSPECTIONS 3-5

 3.5.1—Initial (Inventory) Inspection..... 3-5

 3.5.2—Routine Inspection 3-6

 3.5.3—Special Inspection..... 3-6

 3.5.4—Damage Inspection..... 3-6

3.6 TYPES OF ENTRY 3-6

 3.6.1—Person-Entry Internal Inspection 3-6

 3.6.2—Non-Entry Internal Inspection 3-7

 3.6.2.1—Remote-Entry Internal Inspection 3-8

3.7 INSPECTOR ROLE AND TRAINING 3-8

 3.7.1—Inspector 3-8

 3.7.2—Training 3-9

 3.7.3—Physical Ability 3-9

3.8 INSPECTION EQUIPMENT 3-9

 3.8.1—Standard Inspection Tools and Equipment 3-10

 3.8.2—Nondestructive Inspection (NDI) Equipment 3-15

 3.8.3—Remote-Entry Inspection Equipment..... 3-18

3.9 RECORDING THE INSPECTION 3-19

 3.9.1—Inventory Record 3-20

 3.9.2—Inspection Record..... 3-23

3.10 SAFETY..... 3-30

 3.10.1—Common Hazards..... 3-30

3.11 INSPECTION QUALITY CONTROL AND QUALITY ASSURANCE (QC/QA) 3-34

SECTION 4: CONDITION RATING SYSTEM

TABLE OF CONTENTS

4.1 GENERAL 4-1

4.2 USE OF THE CONDITION RATING SYSTEM 4-1

4.2.1—Guidelines for Using the Rating System 4-1

4.2.2—Inspection of Large- vs. Small-Diameter Culverts and Storm Drains 4-3

4.2.3—Documentation Conventions 4-3

4.2.4—Inspection and Condition Rating Flow Chart 4-4

4.3 APPROACH ROADWAY 4-5

4.3.1—Purpose 4-5

4.3.2—What to Look For 4-5

4.4 EMBANKMENT 4-12

4.4.1—Purpose 4-12

4.4.2—What to Look For 4-12

4.5 CHANNEL 4-15

4.5.1—Purpose 4-15

4.5.2—What to Look For 4-15

4.6 END TREATMENTS AND APPURTENANT STRUCTURES 4-23

4.6.1—Purpose 4-23

4.6.2—What to Look For 4-23

4.7 CONCRETE FOOTING AND INVERT SLAB 4-30

4.7.1—Purpose 4-30

4.7.2—What to Look For 4-30

4.8 BARREL ALIGNMENT 4-35

4.8.1—Purpose 4-35

4.8.2—What to Look For 4-35

4.9 PLASTIC BARREL (HDPE, PVC, PP, FRP) 4-37

4.9.1—Purpose 4-37

4.9.2—What to Look For 4-37

4.10 CONCRETE BARREL 4-40

4.10.1—Purpose 4-40

4.10.2—What to Look For 4-41

4.11 CORRUGATED METAL BARREL 4-50

4.11.1—Purpose 4-50

4.11.2—What to Look For 4-50

4.12 MASONRY BARREL 4-68

4.12.1—Purpose 4-68

4.12.2—What to Look For 4-68

4.13 TIMBER BARRELS 4-72

4.13.1—Purpose 4-72

4.13.2—What to Look For 4-72

4.14 JOINTS	4-79
4.14.1—What to Look For	4-83
4.15 SEAMS OF CORRUGATED METAL PLATE	4-87
4.15.1—What to Look For	4-87
4.16 STORM DRAIN SYSTEM COMPONENTS	4-90
4.16.1—What to Look For	4-90
4.17 MANHOLES, CATCH BASINS, AND BURIED JUNCTIONS	4-91
4.17.1—What to Look For	4-92
4.18 AQUATIC ORGANISM PASSAGE	4-94

SECTION 5: ASSET MANAGEMENT

TABLE OF CONTENTS

5.1 GENERAL 5-1

5.2 TRANSPORTATION ASSET MANAGEMENT 5-1

5.3 BEST PRACTICES FOR DEVELOPING AN ASSET MANAGEMENT PLAN 5-2

 5.3.1—FHWA Culvert Management Case Studies 5-3

TABLE OF CONTENTS

A1. SHAPES	A-1
A1.1—Circular	A-1
A1.2—Pipe Arch and Elliptical.....	A-2
A1.3—Box Culvert.....	A-2
A1.4—Arch	A-3
A1.5—Three-Sided.....	A-4
A1.6—Multiple Barrel/Multicell Barrels.....	A-4
A2. MATERIALS	A-5
A2.1—Corrugated Steel	A-5
A2.2—Corrugated Aluminum	A-8
A2.3—Plastic	A-9
A2.4—Concrete	A-11
A2.5—Solid Wall Steel Casing.....	A-13
A2.6—Cast-Iron and Ductile-Iron	A-13
A2.7—Masonry.....	A-14
A2.8—Timber	A-14
A2.9—Other Materials.....	A-15
A3. CULVERT SYSTEMS AND COMPONENTS	A-15
A3.1—Approach Roadway and Embankment.....	A-15
A3.2—Inlet and Outlet End Treatments	A-17
A3.3—Headwalls, Spandrel Walls, and Wingwalls	A-18
A3.4—Energy Dissipators	A-19
A3.5—Foundations.....	A-22
A3.6—Aquatic Organism Passage (AOP).....	A-23
A4. STORM DRAIN SYSTEMS AND COMPONENTS	A-25
A4.1—Stormwater Collection	A-26
A4.2—Stormwater Conveyance	A-29
A4.3—Stormwater Best Management Practices (BMPs).....	A-30
A5. PIPE COATINGS AND LININGS	A-34
A5.1—Nonstructural Pipe Coatings and Linings.....	A-34
A5.2—Structural Pipe Linings	A-36

TABLE OF CONTENTS

B1. APPROACH ROADWAY	B-1
Pavement	B-1
Guardrail	B-3
Shoulders	B-5
B2. EMBANKMENT	B-7
Slope Stability and Embankment Erosion	B-7
B3. CHANNEL	B-9
Channel Alignment.....	B-9
Bank Erosion and Scour	B-11
Protection	B-13
Waterway Adequacy (Non-AOP)	B-15
B4. END TREATMENTS AND APPURTENANT STRUCTURES	B-17
Cracking (Concrete).....	B-17
Surface Damage, Spalling, Delamination (Concrete).....	B-19
Deformation and Damage (Metal).....	B-21
B5. CONCRETE FOOTING AND INVERT SLAB	B-22
Spalling, Delamination, Patches.....	B-22
B6. PLASTIC BARREL	B-24
Shape	B-24
Local Buckling, Splits, and Cracking.....	B-26
B7. CONCRETE BARREL	B-28
Cracking	B-28
Spalling, Slabbing, Delamination, Patches	B-30
Deterioration.....	B-32
B8. CORRUGATED METAL BARREL	B-34
Surface Damage	B-34
Corrosion.....	B-36
Shape (Closed Shape).....	B-38
B9. MASONRY BARREL	B-40
Masonry Units and Movement	B-40
Mortar	B-42
Efflorescence.....	B-43
B10. TIMBER BARREL	B-44
Connections and Missing Members	B-44
B11. JOINTS	B-45
Joint Separation, Offset, and Rotation	B-45
B12. SEAMS OF CORRUGATED METAL PLATE	B-47
Seam Bolt Holes.....	B-47